

Credenhill Community News



**February 2024
Issue 165**

**A Parish Council publication about Credenhill,
by and for the people of Credenhill.**

Editor: Liza Watkins

credenhillcommunitynews@outlook.com

Deadline:	15th of month prior to publication
Published:	1st every month
Collection:	One Stop, Credenhill
Delivered:	To every household in Credenhill (circulation 860)
Website:	www.credenhill-pc.org.uk

**All contributions should be emailed to the Editor in a Word format.
If you have no access to a computer then a hard copy can be put
through the door of Station Cottage, Credenhill.**

**To receive a digital copy of the CCN, please email the Editor
to be added to the mailing list.**

**Electronic copies and other useful information can be found on the
Parish website www.credenhill-pc.org.uk**

CONTENTS

3	Advertising Rates	13	St Michael's Hospice
4-5	Parish Council	15	Café Church
7	Messy Church	16-18	St Mary's Primary
8-9	The Vicar's Letter	19	Magna Drama
9	Herefordshire Headway	20-21	Community Hall
10-11	The Future of Credenhill Surgery	23-32	Business Directory
13	Friendship Club	31	Useful Contacts

All contributions maybe subject to the editorial discretion.

The editor does NOT accept any responsibility for articles printed in this newsletter.

All details are correct at time of going to press.

If you have any contributions to the magazine, please send them to:
credenhillcommunitynews@outlook.com

Alternatively message the Facebook page [@credenhill](https://www.facebook.com/credenhill)

The CCN is kindly delivered to you by the following volunteers:

Vivien Ball	Reise Adair & Family	Sheena Bescoby
Amanda Lewis	Sue Dixon & Family	Kirsty Lewis & Family
Val & Roger Bailey	Sandra Stevens	Margaret Tyler
Leah Beechey		
Thank You!		

Advertising Rates

10 full colour editions per year are distributed to each house, for free, in the Parish of Credenhill.

Listings are also included on the Parish website and sharing of any adverts through the Facebook page is available.

Advert Size	Annual Price
1/4 page	£60
1/2 half	£105
Full A5	£185
Rear Page A5	£225

Advert Size	Edition Price
1/4 page	£12
1/2 half	£18
Full page	£35

Annual Price for 12 months in the Directory of Service. Edition price for placement anywhere in the magazine for one month only. To advertise your business in the CCN, email the editor with a copy of the advert and your size preference. Payments must be completed before the advert will be published. No CCN editions in January and August. Email for any further information.



Next Meeting

The press and members of the public are invited to the
Ordinary Meeting of the Parish Council
to be held at the Community Hall
on 21st January 2024 from 19:30

There is a 10 minute slot at the beginning and end of the meeting for public question time where members of the press and public can comment on agenda items, and raise any concerns about Local matters.

Parish Matters

Future of Credenhill Surgery

Hereford Medical Group (HMG) have been consulting on the permanent closure of Credenhill Surgery since 23rd November, however due to the low number of responses to this they have extended the closure date of the survey to mid-February. Please complete the survey here:

<https://forms.office.com/r/SZrdPjexAs>

If the surgery closes what would you like to see there?

The Parish Council have supported a request from a prospective party to open a Modern Pharmacy what would go some way into meeting some of the medical needs in the Parish—if you think this is a good idea please include it on your survey response under question 8.

Ultimately we would like to see a new modern surgery built in or close to the parish and the parish council will push for this if any further houses are built in the Parish.



Solar Panels for the Community Hall & Social Club

Following a competitive tendering process the contract to install solar panels and battery storage at the Community Hall & Social Club has been awarded to a local company, EPIC Global Group. By the time this hits your door mat most of the work will be complete.

There are 2 systems being installed, a 13.6kW System with 10kWh of battery storage for the Hall which has been sized as a complete solution for the Hall and a 7.65kW System with 5kWh of battery storage for the Club with an oversized inverter to allow it to be expanded as funds allow to a 20kW system in the future.

This has been part funded by the Parish Council; £8,000 from the Asset Improvement Fund (formally the Culvert Repair Fund) and the Community Hall reserve of £15,000 and should bring the energy cost burden for both organisations down to a manageable level.

Credenhill Social & Sports Club—Windows & Doors

Following another competitive tendering process new windows and doors will be installed at the club. This work will be completed during February by Window Wise Hereford at a cost of £10,400 for all 11 windows, 1 door and 3 fire exits. This has been fully funded by the Parish Council from the Asset Improvement Fund (formally the Culvert Repair Fund).

Both projects will move us a step further to the Countywide Target of net zero by 2030 and ensure that the EPC rating for both buildings is of an acceptable level.

We now have FOUR Councillor Vacancies

We need your help more than ever!

Are you be interested in joining the Parish Council?
For more information please contact the Parish Clerk.



PRE-SCHOOL PHONICS SESSIONS

LEARN PHONICS
THROUGH EXPLORATION,
PLAY AND SONG!

AGES 3-5

CREDENHILL COMMUNITY HALL
MONDAYS 9:45 - 10:30

TO BOOK
head to the website
www.brightasabutton.co.uk
OR
email on
ailsa@brightasabutton.co.uk



ELECTRICIAN



www.electricsfixed.com

Do you find it difficult to get someone to come and do a small job?

- ◆ Extra Lights and Sockets
- ◆ **New Fuseboards**
- ◆ Smoke Alarms
- ◆ **New installations**
- ◆ Electric Vehicle Chargers
- ◆ **Solar PV Installations**
- ◆ Battery Storage

- ◆ Landlord's and Home Buyers Reports (EICR)
- ◆ **Electric Heaters**
- ◆ Fault Finding
- ◆ **PAT Testing**
- ◆ Garden Lights
- ◆ **Rewires**

Satisfaction Guaranteed



Call Neil at (01432) 629050
Email info@electricsfixed.com



St Marys Church, Credenhill

Shrove Tuesday

Tuesday 13th February

at Headway

A free afternoon

of flipping good fun and fellowship.



Activities start at 4:30pm

Followed by

Pancake Party

Pizza and Pulses.

Or just join us for tea

At 5:30pm



Everyone welcome Children must be accompanied

(voluntary donations welcomed).

If you are coming just for tea message Donna

donna.jones4249@gmail.com

The Vicar's Letter

Dear Friends,

I walk Joey, my dog, up to St Mary's Church and back on most evenings. Quite often I meet people in the churchyard, tending graves or just walking through and it's lovely to see that the churchyard is visited often and used by a surprising number of people. Of course, this means that the paths get used a lot and may become muddy and slippery so I hope that you will take care when you do visit.



Our church volunteers kindly provide bins and bags for dog walkers to put their used doggy poo bags into for which we should all be very grateful, and many people use the bins for that, but also to dump other rubbish. I have removed bunches of dead flowers, takeaway food bags and boxes, and general car rubbish from the dog poo bin. We have notices up asking people to please take their rubbish home with them because the church does not have a council rubbish collection, so we must carry all rubbish either to the tip or place it in our domestic bins at home. So, this is a reminder to those who visit our church to be mindful of our lovely (mostly quite elderly) volunteers who work to keep the area nice for our visitors, and to be thankful for all they do.

February 2nd (Candlemas) marks the end of Christmas and so we ask you to remove all Christmas flowers, wreaths, and ornaments from the graves you tend by then, otherwise I will dispose of them.

On a brighter note, Tuesday 13th February is Pancake Day and we're having a party at Headway, details elsewhere in the CCN. You are all welcome to join us for this event.

With blessings,

Rana

From the Church Registers

Marriage - 21st December Gwenllian Mai Price & Christopher James Griffin

Church Services for February

4th	11.00am	St Mary's Church	Holy Communion
11th	11.00am	St Mary's Church	Holy Communion
18th	11.00am	Headway	Café Church
25th	11.00am	St Mary's Church	Holy Communion

Credenhill Community Noticeboard

Credenhill Community Noticeboard is a Facebook group set up for residents to share information, events, pictures and items of interest to our community.

Join the group if you want to know what's happening or to get information out quickly to its followers.

This is the link:

<https://www.facebook.com/groups/499485818200829/?ref=share>

OR search Credenhill Community Noticeboard on Facebook



HEREFORDSHIRE HEADWAY

Headway House, Trenchard Avenue, Credenhill
Hereford HR4 7DX

Coffee Morning



Thursday 1 February 2024
Thursday 7 March 2024



Coffee and Raffle from 10:30-11:30

All welcome
Please come for a catch up and support us

Consultation on the future of Credenhill Branch Surgery

HMG is consulting on the views of stakeholders on the proposals to close the Credenhill Branch Surgery. The consultation will last from 23rd November 2023 to 15th February 2024.

Credenhill was formerly a branch surgery of Quay House Medical Centre and up until the pandemic, operated for 5 half days per week. As part of a wider estates review, HMG has considered the viability of the branch surgery at Credenhill and concluded that we must commence a consultation on the closure of the branch surgery with patients and stakeholders. In making this decision, we have considered the following:

The premises is not fit for purpose –

- It is a remote one consulting room and one nurse treatment room premises which is a converted shop unit. All other HMG premises are purpose built.
- The clinical environment needs significant investment to bring it up to modern standards.
- Whilst it is currently being used for storage of patient records, the fact that the premises is not accessible to the community is an issue which needs to be resolved.
- The surgery does not meet disability access requirements and there are limited options to change this.
- It is potentially safety risk having unwell patients at a remote site.
- There is no dispensary at the site. (The previous arrangement in place for allowing collection of prescriptions dispensed by the pharmacy at Westfaling Street does not meet the strict regulations in place for dispensing medication).
- To keep it open would result in a reduction in service at other sites.

As part of this consultation, there are no plans to change the boundary for HMG and all patients registered with the practice will continue to be able to access healthcare at our other sites.

Following the end of the consultation period we will review the responses and finalise any decision. If the Practice concludes to proceed with closure, then a formal application will be made to the Herefordshire and Worcestershire Integrated Care Board (HWICB).

The consultation will be available online at: <https://forms.office.com/r/SZrdPjexAs> or using the QR code:

This information will be available on our website and on our social media pages. Alternatively, interested parties can submit their views on the following questions by dropping a paper copy in to any of the branch sites or by emailing hmg.enquiries@nhs.net.

The questions are as follows:



1. Name (optional)
2. Email address (optional)
3. Do you support the plans to close the Credenhill branch site, with the premises being redeveloped into an alternative use?
 - Yes
 - No
 - Not sure
4. Please describe on what basis you are responding to this consultation
 - A HMG patient who lives in the Credenhill area
 - A resident of the Credenhill area but not a patient of HMG
 - A community group
 - An NHS Partner (e.g. another surgery or primary care contractor)
 - Other
5. What impact would the closure of Credenhill branch surgery have on your ability to access healthcare?
6. What impact would the closure of the branch surgery have on the Credenhill area?
7. What impact would the closure of Credenhill have on the services that you provide?
8. What other considerations would you like to be considered as part of this consultation?
9. If, following the consultation a decision to close Credenhill is made, and then approved by the Integrated Care Board, is there anything that you would like Hereford Medical Group to consider for HMG patients who live in the Credenhill area?

The Partners
Hereford Medical Group

Christmas at St Mary's Church.

We began our celebrations with our Gift Service where we received a large amount of donations including money, Christmas treat and presents which were taken to the food bank.

Our Messy Church Christmas party was enjoyed by a relatively small group of 12 children and 16 adults. Our theme was stars and we decorated biscuits, made glace fruit window stars, pom-pom stars, Nativity stars, star wands, stained glass stars, jewelled stars and played party games before we enjoyed a Christmas tea of Chicken and chips, ice cream and cakes.



We held a well attended Carol Service in the Community at Headway after which we enjoyed a traditional afternoon tea. Thankyou to the ladies of the church for their help and provisions.



On Christmas Eve we held a Christingle Crib Service in church which was decorated by stars many of which were made by people of the village. This was a change from previous years as we decided to hold it at 4:30 which seemed to be appreciated by many.

CREDENHILL FRIENDSHIP CLUB

Happy New Year to you all.

It saddens me to say we have news that one of our longtime members has died. Fred Hammond had been in hospital for several months. I visited him a few times but he got much weaker. He will be missed.

Februarys Meeting on Thursday 1st February will be a talk about India by Penny Platts. This will be a good evening so I do hope you can all come along.

Wrap up warm and take care. I will see you all at 7.15pm.

**Trevor Collins
01432769397**

St Michael's Hospice supporter Mike Pullin receives national TV recognition



**St Michael's
Hospice**

Many people across Herefordshire will be aware of Mike Pullin, and his unwavering dedication to St Michael's Hospice. 87-year-old Mike was recognised by The One Show which surprised him as part of the BBC show's One Big Thank You series, aired on Thursday evening.

The accolade was recognition for decades of support for St Michael's through the Hospice Angels fundraising group, which was founded by Mike and has now helped bring an astonishing £700,000 into the Bartestree based Hospice.

"I never thought the Angels would reach this milestone," said Mike, who received a BEM (British Empire Medal) in 2012 in recognition of his charity work. "I'm just so proud to have been a part of it, but also so grateful to everyone who has supported the Angels over the years." Mike graciously says he wouldn't have achieved the success without his fellow Angels.

"It's a charity I care deeply about," added Mike. "The work carried out by those at St Michael's is exemplary, and I have known many people who have received this care, and they have all been so grateful."





The perfect way
for girls aged 5-11
to get involved
with football

Play
Football!



TIME AND DATE

TBC



LOCATION

The County Ground HR4 9NA

WHO WE ARE



NEXT STEPS

head to www.englandfootball.com/WeetabixWildcats to book your first session, or contact us to find out more

ybfa@outlook.com



ENGLAND
FOOTBALL



Next Café Church

At: Headway

Sunday 18 February 2024

Time: 11am

Followed by a shortened form of Holy Communion for anyone who would like it.

Our service for December was the Community Carol Service. The room at Headway was full and we all enjoyed a traditional service with lessons and carols including candlelight. This was followed by a Christmas Afternoon Tea enjoyed by 36 people. Thankyou to the ladies of the church for providing this and to everyone who helped in any way.

The hamper draw took place after tea. Thankyou to everyone who provided hampers and those who sold and/or bought tickets, £320.50 was raised.

We will have a basket for donations to the Hereford Food Bank at the next Café Church.

Café church is church in the community. If you find church difficult or have difficulty getting up to church then do consider joining us for a more informal approach or, if you prefer, join us at 11:30 for the conclusion and Communion. Coffee and refreshments are available throughout the morning.



Magnis Group

Lent Souper Lunches

In aid of the churches of the Magnis Group
Every Thursday throughout Lent.



At Mansell Lacy Church

Serving from 12:30



Thursday 15th February and Thursday 7th March
In aid of Credenhill Church

Join us to enjoy a variety of homemade soups and breads
Donations welcome



Wisdom

*""Knowledge becomes wisdom
only after it has been put to good use""*

~ Mark Twain ~

Carols in the Community



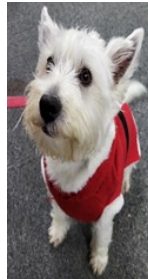
In December Years 3 & 4 sang Christmas carols at Headway and Year 2 joined them to sing carols at Credenhill Court. The children also presented handmade Christmas cards to all of the clients and residents they met.

The children & staff had a wonderful time and feedback received from the residents confirmed that it had been an “absolutely super” event!

Years 5 & 6 also sang Christmas carols in Hereford.

They visited the Co-op store near Grandstand Road, Blue Diamond Garden Centre, The Old Market and The Weir Residential Home.

The children were kindly invited to have their lunch break at the Salvation Army Community Centre.





Upcoming Events

12-16 Feb

15 Mar

20 Mar

22 Mar

8 April

Half Term Holiday

KS1 Easter Celebration

KS2 Techniquet Trip

End of Spring Term

Start of Summer Term

Rudolph Run 2023

In December we took part in the St Michael's Hospice Reindeer Run and raised over £100.



Pupil Achievements

Harrison & Kai played for Cheltenham Town DC vs Bristol Rovers Academy recently.

Harrison & Kai's families are incredibly proud of them and so are all of us at St Mary's!



Follow us @SMCredenhill

Choose us as your Co-op local cause

Go online coop.co.uk/membership



Our cause: we would like to repurpose an area outdoors to provide our children with a new library, Forest School and learning hub.

This project will improve the wellbeing of our children and enrich their learning experience.

We would greatly appreciate your support by signing up to the Coop membership scheme and opting to support our cause.

Please sign up via the Coop membership weblink below:

<https://membership.coop.co.uk/causes/80099>

Please share this link with your family and friends. The more support we receive will result in greater funds for the new learning hub.

Thank you.





Magna Performing Arts

Sponsored by



Holmer Park

A MOSAiC HEALTH CLUB & SPA

Aladdin

Our year is off to a flying start with the first of our annual productions, the Pantomime Aladdin.

We are looking forward to seeing our audiences once again!

Little Known Fact...

The traditional pantomime is being considered for Cultural Heritage status!

If you would like the opportunity to appear in panto or any of our other productions, now is the ideal time to join the Magna/Young Magna Family.

Just drop in or contact us for details on 07954 081999
Or email magnadrama79@yahoo.com

NEXT PRODUCTION IN MAY

KEEP YOUR EYES PEELED FOR

FURTHER DETAILS TO COME

Magna (adults) & Young Magna (8-16yrs)

**Are looking for like minded people to join our friendly family.
If you like being on stage, behind the scenes or front of house you
would be welcome.**

**Join us in up to 4 productions a year, from panto to parody,
classics to comedy, realism to the ridiculous, we aim to entertain.
No experience necessary.**

**Magna meet Tuesdays 7.30pm Occasional Fri & Sun
Young Magna meet Sundays 2.30-5pm Occasional Tues & Fri**

Contact Betty 07954 081999 | magnadrama79@yahoo.com



Credenhill Community Hall

Solar and Wi-Fi

Wi-Fi is now up and running in the Hall. This will enable us to open up bookings for people who want to use the space for training purposes or meetings.

Starting this week we are having solar panels installed. This is the next step in our project of moving to a greener energy source for power. Our neighbours in the Social Club will benefit too as they are in the same building.

The ongoing project to make hall sustainable and comfortable is done mainly through grants and fund-raising by the Hall Trustees and the running costs are met from income generated by bookings.

Volunteers

The hall is run by volunteers. The Trustees to the Charity are mainly representatives from various groups who use the hall and others are members of the community. If you are interested in becoming a Trustee please drop us a message and we will give you the details. It only entails a few hours of your time and will keep a much loved and well used community space open for the use of many people.

Winter Warmers

Come and cosy up with one of our weekday groups in the hall during the winter months. The Nutty Crafters meet each Friday to enjoy a coffee, chat and sometimes a bacon butty while they craft. Earlier in the week there are a variety of groups you might enjoy with other parents and pre-schoolers. The hall is also home to Magna and Young Magna Performing Arts.

Hire The Hall For Events & Parties!

Newly refurbished, large airy hall with outside area.

Perfect for any event.

Plenty of parking.

**For more information contact Betty Morris on 07954 081999
or email magnadrama79@yahoo.com**

www.credenhillcommunityhall.org.uk | Also on Facebook





Credenhill Community Hall

Day	Group	Leader	Contact Details
Monday 9.30 - 10.30am	Phonics & Maths For Preschool	Ailsa Biggs	ailsa_10@yahoo.co.uk
Tuesday 8.30 - 1pm	Baby Sensory 1 - 13 Months	Annabelle Palethorpe	07341956056 hereford@ babysensory.co.uk
Tuesday 7.30 - 10pm	Magna Performing Arts	Betty Morris	07954 081999
Wednesday 10 - 11am 12 - 12.45pm	Pop Cats Music & Movement 0 - 5yrs	Cherie Appelt	07760356172 Popcatshereford @gmail.com
3rd Wednesday of Month 6 - 10pm	Parish Council Meeting	Lee Harper-Smith	07956 447056
Friday 10 - 12noon	Credenhill Nutty Crafters	Corrie Smissen	07789 401151
Friday 6.30 - 9pm	Magna/ Young Magna	Betty Morris	07954 081999
Sunday 2.30 - 5pm	Young Magna	Betty Morris	07954 081999

Want To Hire The Hall For Your Group?

Do you run some kind of group or maybe you are thinking of starting one?
We will help you to set up Credenhill Community Hall as your base.
The Village is particularly interested in any keep fit classes and have
some evening and afternoon slots available .
Contact Us Now 07954 081999 or email magnadrama79@yahoo.com

*An original family panto
by B A Morris*



Aladdin

**Thursday 15 Feb 7pm
Friday 16 and Saturday 17 Feb
2pm & 7pm**

**Tickets £9 (£7 concessions)
magnatickets@gmail.com**



Congratulations to Mike Honeysett.

Congratulations to Mike Honeysett who was commissioned as a Local Minister at St Mary's Church, Credenhill on the 7th January by Rev Dr Elizabeth Wild, the Director of Mission and Ministry in the Hereford Diocese.

This was achieved following a year of study at Ludlow.

It was lovely to share this occasion with members of churches from across our Benefice and share refreshments afterwards.



Caring for and
supporting
people in the comfort of
their own home.

 **Kemble**
at Home

Since 1993

Kemble at Home is a multi award-winning, local, family company providing OUTSTANDING
Visiting and Live-in Care for people in Herefordshire.
www.kembleathome.co.uk
Call Kelly Hennessey-Ford on 01432 382017 Email: kelly.hf@kembleathome.co.uk



The Friendly Face of Professional Legal Advice



For expert personal and business legal support, speak to our specialist teams at our three offices across Herefordshire.

We're here to help.

Wills & Estates

Family

Residential Property

Commercial Property

Employment

Leominster
26a Broad Street
01568 616333
leominster@gabbs.biz

Hereford
14 Broad Street
01432 353481
hereford@gabbs.biz

Hay on Wye
1-2 Chancery Lane
01497 820312
hay@gabbs.biz

www.gabbs.biz



Craig Powell

HANDYMAN

PAINTING & DECORATING

REPAIRS & MAINTENANCE

GARDENING

FULLY INSURED

DBS CHECKED

LOCAL & EXPERIENCED

07866 133 277

THE WASP GUYS

Wasp nests destroyed

01432 507300



Only £66

(inc VAT)

www.thewaspguys.co.uk

Proud members of
Checkatrade.com
Where reputation matters

fsb⁰⁸
MEMBER

The Wasp Guys Limited.

TRANSFORM YOUR HOME WITH COACH HOUSE INTERIORS

At Coach House interiors we span four generations who have all worked in the soft furnishing industry. There is not a window, bed, piece of furniture, floor or wall that we have not dressed in one way or another throughout the last 60 years! Fashions come and go in our world, and we are proud to say that we can create any soft furnishing project from every decade.

Whether you want swags and tails, traditional lampshades, quilted bedspreads, roman blinds, the latest smart technology or shutters at your window, we will listen to your requirements, work to your budget and oversee every step of your scheme.

We can dress four poster beds, create half testers or coronas from scratch, make any shape of headboard or stool you have in mind, recover beloved antique kidney shaped dressing tables or completely update a 'tired' piece of furniture, whilst we are a team of interior designers we are also trained seamstresses and upholsterers.

Any scheme we undertake has a starting point. If you are looking for paint or wallpaper ideas, it usually has to tie in with an existing plan. If you wish to keep your existing soft furnishings, we can work with you to refresh your rooms with either our extensive wallpaper collection or our expertise in selecting a paint colour to bring your room to life.

We can re-build sentimental pieces, transform a previous owners house into your 'dream home' and work with you to bring the most awkward spaces into your desired aspirations. Helping you transform your home into the new living space you wish for.



Most importantly though, above all the experience we can bring, we pride ourselves on listening to your thoughts on your project and working with you to achieve this.

We are a dedicated team, who pull together here at Coach House Interiors, to work with you from your initial contact with us whether by e-mail, phone call or visit, and take any idea you present to us; from your initial contact right through to completion.

We look forward to seeing you in person and working with you in either your home or business to achieve your exacting requirements.

Opening Times
Monday - Friday: 9.30am - 5pm
Saturday: 10am - 2.30pm



COACH HOUSE INTERIORS

Coach House Interiors are three generations of seamstresses, upholsterers, fitters & interior designers.

Our skills will combine with your ideas to create any soft furnishing project you have in mind.

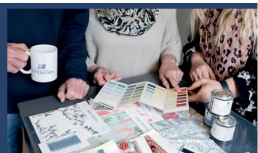


Bespoke Soft Furnishing

We design, make, deliver and install from our Herefordshire workshop.



Bespoke Curtains • Upholstery
Blinds & Shutters
Interior Design • Consultations



Opening Times: Monday - Friday: 9.30am - 5pm Saturday: 10am - 2.30pm

Tel: 01981 500 777 Email: info@coachhouse-interiors.com www.coachhouse-interiors.com

Bagley's Croft, Brinsop, Hereford, HR4 7AT

TV problems...? Poor picture...?

Call

AARDVARK INSTALLATIONS



- New TV aerials • Freesat & Sky installation • Extra TV points fitted
- Set-up and installation of equipment • Catch-up TV problems
- Broadband, Wi-Fi & networking • CCTV installations

01432 483101

email:aardvark@alpens.co.uk

www.aardvarkinstallations.co.uk



TRUSTMARK
Government Endorsed Quality



Foot Health Practitioner



Treatments for:

- Painful corns & calluses
- Ingrown toenails
- Diabetics
- Nails Trimmed
- Plus more

Home Visits Only

Member of the Accredited
Register of Foothealth
Professionals

*15 Years Experience
in Foot Care*

Brian Jenkinson

DIP CFHP MPS Pract

01544 230 501

07977 214 756



Mobile Hair Dresser Mandy's Mobile Hairdressing



Ladies wash/bd or set £17

Ladies wash/bd/set inc cut £25

Perm all inc from £48

Full Head colour Inc cut from £48

Semi colours Inc cut from £38

Foils full head inc cut from £58

Gents Cuts £12

**35 years fully qualified SRH
Now Welcoming New Clients**



mandysmobilehairdressing
mandyshairdressing@gmail.com

07823 883 362

ACCESS **PAVING** LTD

Top Soil For Sale

**Best Selected
Herefordshire Top Soil
Freshly Screened
to Order.**

Free Local Delivery.

Delivered Loose.

07967 810604 | 01432 769037
www.accesspavingltd.co.uk

Maids Domestic Services

Dusting
Vacuuming
Bathrooms
Kitchens
Mopping
Ironing
Changing beds



A small, reliable, high quality service with
26 years' experience.

We pride ourselves in providing skilled,
trustworthy staff, who receive extensive training
and are fully insured.

***Specialising in regular weekly, fortnightly
and monthly cleans, we cater for all
your domestic needs.***


Contact Janet on 01432 350033 or 07702174036
janet.stones@btinternet.com

Lloyd Instant PLUMBING

Reliable and Local

Free Estimates

**Showers/Bathrooms/
Leaks/Drains/Radiators/
Taps/Overflows
& more**

 **07813 313252**



The Centre in Hereford for
complementary therapies

18 different therapies provided by
highly trained and experienced staff

The Very Best Help for Your Health

Eastholme Avenue, Belmont
HR2 7XT

01432 279653

herefordcentreornaturalhealth.com

M D R ELECTRICAL

Mark D Ridge (Proprietor)

All aspects of electrical work undertaken.

Showers, Fuseboard upgrades, Extra sockets, Lights,
Security lights supplied & fitted. Power supplies to garages & outbuildings.

Full/Part Rewires. New builds & Conversions.

Condition reports/Landlord certificates, PAT Testing

NICEIC Registered

Public liability & Professional indemnity Insurance cover.

Call Mark: 07760 433479 or 01544 327161

Or email: mdrelectrical330@gmail.com



TOLLEYHOME SERVICES



Chimney Sweeping
& Maintenance



Multi Fuel Stove
Installation & Servicing



Window Fitting
& Repair Service



Property Maintenance



Call Stu on 07867 675939

Email info@tolleyhomeservices.co.uk

Website tolleyhomeservices.co.uk

Nes^{ential} Footcare IN YOUR HOME

Annie Ness

MCFHP
MAFHP DipFH



**Foot Health
Practitioner**

01432 760552 07798 780244

*Toenail cutting
Nail thinning
Callus : Corns
Ingrown toenails
Cracked heels
Fungal nails*

*Footcare in
the comfort
of your home*

nessentialfootcare@gmail.com





Unit 2, 7 Canal Road, Hereford, HR1 2EA

fishwickautoservices@yahoo.com

 Fishwick Auto Services

MOT's from £40

Diagnostics

Brakes

Services

Clutches

Cam Belts

Plus much more...

Courtesy car available

Vehicle Recovery available

**Air Conditioning re-gassing on
both types of gas with
mobile service also available!**

FREE COLLECTION IN THE CREDENHILL AREA

Courtesy car price starts at £10 + vat per day.

Recovery from £40. Free collection does NOT include recovery.

Terms and conditions apply.

Local Pilates Classes in Credenhill

Great for all levels!

I believe living a healthy lifestyle begins with
maintaining a strong and fit body.
The technique of Pilates will have you feeling good
and seeing great results.

Small group in person classes at my home studio
or zoom sessions

Over 15 years' experience

Group Mat 1-hour Classes – in Person or on Zoom

£9 single class pay as you go
or

£8 per class for a term block (usually between 6-8 weeks £48-64)

Private 1-hour Lessons – in Person or on Zoom

£40 – pay as you go
or

£228 for a block of six (£38 per class)

Interested?

Please feel free to get in touch with any questions you may have.

07756 933187 or kathyjagger@icloud.com

"I look forward to helping you reach your goals"





Contacts

Editor	Liza Watkins	credenhillcommunitynews@outlook.com
Parish Council Chair	Martin Leaton	chair@credenhill-pc.org.uk
Parish Council Clerk	Lee Harper-Smith	07956 447056 clerk@credenhill-pc.org.uk
County Council	Councillor R Matthews	01432 760498
West Mercia Constabulary		0300 3333000 herefordrn.snt@westmercia.pnn.police.uk
Crime Stoppers		0800 555111
Safer Neighbourhood Officers	PC Stefan Hawes PCSO Adam Westlake PCSO Christina Howard	07773054234 07773052580 07773052529
Dog Warden		01432 261761 (999 for dangerous dogs)
Street Light Problems		01432 261800
Power Cut	Western Power	105
Water Leak	Welsh Water	0800 0520130
Gas Leak	National Grid	0800 111999
St Mary's Primary School	Claire Ross	01432 760408
Nursery & Preschool	Shelly Gummery	07596 324552
Vicar of St Mary's Church	Rev. Rana Davies-James	01432 760443 revrana@btinternet.com
Church Wardens	-	-
Credenhill Social Club	Steward	01432 760600
Young Magna	Betty Morris	07954 081999 magnadrama79@yahoo.com
Magna	Betty Morris	As Young Magna above
West Hereford Petanque Club	Peter Clarke	07484 311360
Friendship Club	Trevor Collins	07880 355523
Credenhill Surgery		01432 272175
Part of Hereford Medical Group		Out of Hours 111
Headway		01432 761000 info@herefordshire-headway.co.uk
Mobile Post Office Mon & Thurs 10.30-11.45 Tues 10.30-11.15	John	01885 482201
Credenhill Community Hall	Betty Morris	07954 081999 magnadrama79@yahoo.com



PAVE-DRIVE LTD

SPECIALISTS IN BLOCK PAVING, TARMACING & RESIN BOUND

PROUD TO BE YOUR COUNTY'S LEADING PAVING COMPANY



Before

RESIN DRIVEWAYS & PATIOS

Weed Free, No Maintenance,
Porous Surface

Save yourself the cost of
digging up your old drive and
apply to your existing surface

COST EFFECTIVE SOLUTION



After

LANDSCAPING • PATHS • PATIOS • DROP KERBS • GARDEN WALLS FENCING
DRIVEWAYS • RESIN BOUND DRIVEWAYS • CARPARK REPAIRS HOT TAR
SPRAY & CHIPPINGS SURFACE DRESSING • ARTIFICIAL LAWNS
NATURAL STONE PATIOS • CLEANING & SEALING SERVICES

DOMESTIC & COMMERCIAL

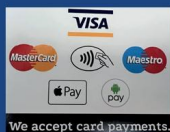


WHY CHOOSE PAVE-DRIVE LTD

Competitive Prices | Free Quotations given

All work completed comes with a 5-year guarantee

Established Family Run Business | Fully Insured | Local References available



We accept card payments.

View our gallery at www.pave-drive.co.uk

Call us on 01432 367203 | 07867 910377

email admin@pave-drive.co.uk

Follow us on:



Pave-Drive Ltd



[pavedrivelttd](https://www.instagram.com/pavedrivelttd)